

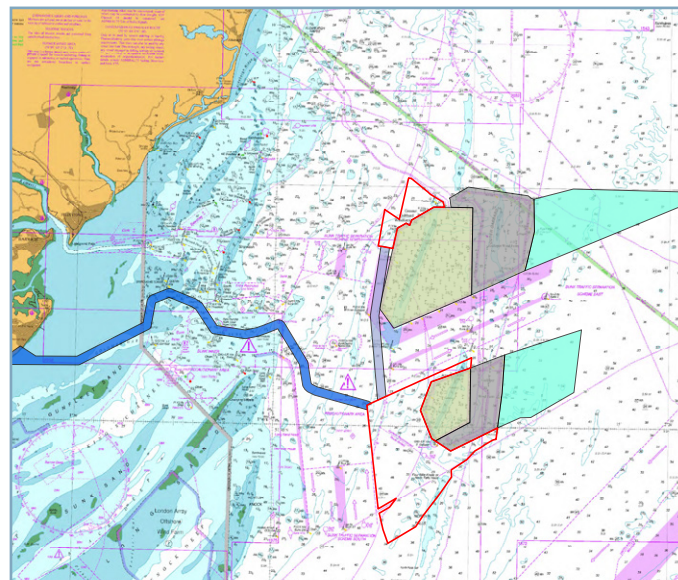


Introduction to North Falls

North Falls is a proposed offshore wind farm in the southern North Sea located between 22 and 43 kilometres from the East Anglia coast. The site totals 150 km² split across two zones to take into account existing major shipping routes. The northern area covers around 20km², and the larger southern site is close to 130km².

It will comprise up to 72 offshore wind turbines and the offshore infrastructure, including the turbines, the substation(s) and the array cables connecting them, would be located within the boundaries of the two array areas.

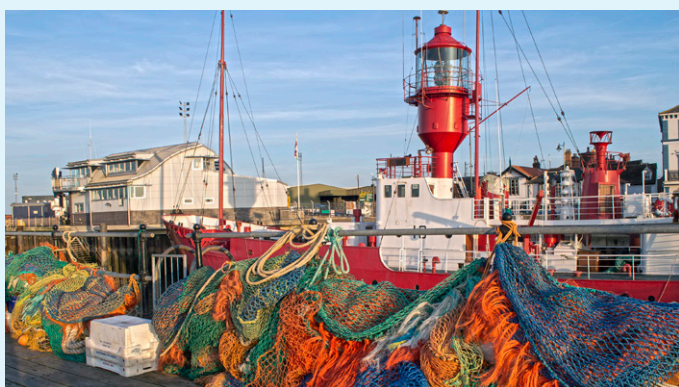
The electricity generated by North Falls is expected to be transmitted to shore by export cables which will be located within an offshore export cable corridor that has been narrowed down to an area north of the Margate and Long Sands Special Area of Conservation (SAC) and Kentish Knock East Marine Conservation Zone (MCZ), with a small overlap with the Outer Thames Estuary Special Protection Area (SPA) as it nears land. The landfall site is expected to be between Frinton-on-Sea and Clacton-on-Sea.



Map of North Falls Offshore Wind Farm offshore site and proposed cable route.

Development of this nationally significant infrastructure project started in late 2020 and will continue in to 2023, when the development consent order application is due to be submitted to the Planning Inspectorate.

Working group for commercial fisheries



Fishing nets in Harwich.

The commercial fisheries industry is a key stakeholder group for North Falls and as such will be the focus of specific and ongoing engagement, liaison and consultation.

A commercial fisheries working group has been established to be a forum where information can be exchanged and open discussions held for the mutual benefit of both the fishing industry and the project. The group plans to hold regular meetings to cover updates on the project and to outline any future survey plans, as well as to provide information on offshore working practices, options for coexistence and mitigation measures.

The working group will be run by North Falls' fisheries consultants, Brown & May Marine who can be contacted via the details overleaf.

Consultation with fisheries stakeholders

Consultation is a vital part of the development consent application process and to date North Falls has engaged with fisheries associations, Kent and Essex IFCA and the Marine Management Organisation both in relation to survey activity and to collect data on fish populations for the purposes of environmental impact assessment.

Future consultation with fisheries stakeholders will take place prior to application to inform the commercial fisheries environmental impact assessment. A plan for engagement is currently under development and will be shared with stakeholders once finalised.

Public consultation

In terms of public consultation, the introduction to the project was carried out in late 2021 with outcomes available to view on the website.

A further consultation, prior to the commencement of the Preliminary Environmental Information Report (PEIR), will be held in late 2022, with the statutory consultation set for 2023. Feedback from PEIR will inform the review of the array boundaries and layout, including spacing between wind turbines.

Sign up for Notices to Mariners

To add your name to the Notice to Mariners distribution list please email Brown & May Marine via the details below.



Offshore surveys

Offshore surveys for the project to date have included a programme of aerial bird and marine mammal surveys between 2019 and 2021, along with around four months of geophysical and benthic surveys undertaken in 2021. This year, North Falls has carried out vessel traffic monitoring to review the types and numbers of vessels sailing in the area near the project's proposed arrays, and the export cable route.

All the survey data will feed into the planning process to help design the offshore cable route, location of the offshore substation and turbines, and construction methodologies.

There are currently no further offshore surveys planned prior to submission of the project's development consent order application. Any offshore survey plans post-submission will be shared with fisheries stakeholders via future newsletters and commercial fisheries working group meetings.



55km

Provisional offshore export cable route length



Up to 4

Max offshore export circuits



0.5 – 3m

Target min cable burial depth where buried



2

Max offshore substation platforms



228km

Estimated length of array cables

Fisheries Enquiries

For fisheries-related enquiries please contact our fisheries consultants:

E: northfalls@brownmay.com

T: 01379 772871

Brown & May Marine Ltd, Progress Way, Mid Suffolk Business Park, Eye, Suffolk, IP23 7HU

General Enquiries

For general enquiries please contact:

E: contact@northfallsoffshore.com

T: 0800 254 5340

For more information about North Falls visit the project website: www.northfallsoffshore.com