



**NORTH FALLS**

*Offshore Wind Farm*

# **INTRODUCTORY CONSULTATION - REPORT**

*February 2022*


**NORTH FALLS**
*Offshore Wind Farm*

# CONSULTATION REPORT

*February 2022*

|                               |                                |
|-------------------------------|--------------------------------|
| <b>Project</b>                | North Falls Offshore Wind Farm |
| <b>Sub-Project or Package</b> | Consents                       |
| <b>Document Title</b>         | Phase 1 Consultation Report    |
| <b>Document Reference</b>     |                                |
| <b>Revision</b>               | 2                              |
| <b>Supplier Reference</b>     | Camargue                       |

This document and any information therein are confidential property of North Falls Offshore Wind Farm Limited and without infringement neither the whole nor any extract may be disclosed, loaned, copied or used for manufacturing, provision of services or other purposes whatsoever without prior written consent of North Falls Offshore Wind Farm Limited, and no liability is accepted for loss or damage from any cause whatsoever from the use of the document. North Falls Offshore Wind Farm Limited retains the right to alter the document at any time unless a written statement to the contrary has been appended.

| <b>Revision</b> | <b>Date</b> | <b>Status/Reason for Issue</b> | <b>Originator</b> | <b>Checked</b> | <b>Approved</b> |
|-----------------|-------------|--------------------------------|-------------------|----------------|-----------------|
| 01 (Draft A)    | 26/01/2021  | First draft                    | Toby Barker       |                |                 |
| 02 (Draft B)    | 21/02/2022  | Second draft                   | Toby Barker       |                |                 |
|                 |             |                                |                   |                |                 |
|                 |             |                                |                   |                |                 |

## TABLE OF CONTENTS

## Page No

### Our approach to consultation

|  |   |
|--|---|
| 1. Introduction                            | 4 |
| 2. North Falls approach to consultation    | 4 |
| 3. Information provided at consultation    | 4 |
| 4. Promoting the consultation              | 5 |
| 5. Publication of the consultation website | 5 |
| 6. Briefings conducted with stakeholders   | 7 |
| 7. Number of responses received            | 7 |
| 8. Summary of responses received           | 7 |

### Appendices

|   |    |
|---|----|
| Appendix A – Postcard mailer                                  | 11 |
| Appendix B – Launch media release                             | 12 |
| Appendix C – Media list                                       | 14 |
| Appendix D – Media coverage                                   | 16 |
| Appendix E - Reminder media release                           | 17 |
| Appendix F – Stakeholder email                                | 18 |
| Appendix G – Stakeholders contacted at consultation launch    | 19 |
| Appendix H – Letter to landowners                             | 23 |
| Appendix I – Advertisement in the Clacton and Frinton Gazette | 24 |
| Appendix J – Online advertisements                            | 25 |
| Appendix K – Consultation website screen shots                | 26 |
| Appendix L – Downloadable information sheet                   | 44 |

## OUR APPROACH TO CONSULTATION

### 1. INTRODUCTION

North Falls Offshore Wind Farm is an extension to the existing 504 MW Greater Gabbard Offshore Wind Farm. The project is being developed in the southern North Sea, more than 20km off the UK coast. The site is in two parts, which together cover a total area of 150km<sup>2</sup>. The project is being developed by North Falls Offshore Wind Farm Limited, a joint venture company owned equally by SSE Renewables and RWE.

This consultation report outlines an Introductory Community Consultation on the project that was live between 25 October 2021 and 10 December 2021.

The consultation was delivered wholly online and promoted to the local community via media releases, digital and display advertising with the Clacton and Frinton Gazette, printed leaflets delivered to 46,000 addresses and direct emails to local stakeholders / those who have registered an interest in the project.

### 2. NORTH FALLS APPROACH TO CONSULTATION

This Introductory Consultation was the first of up to four consultation phases, including one statutory phase, that will be undertaken during the project's development and before the Development Consent Order (DCO) application is submitted.

It was designed to introduce stakeholders to the project and give them an early view of the project proposals, even though the onshore grid connection had not yet been provided by National Grid.

The team felt it was prudent and transparent to provide a 'status report' and give stakeholders the opportunity to give their insights and feedback at this juncture in the development, given that it had been more than a year since the award of the Agreement for Lease (AfL) by The Crown Estate.

Further consultations will be held in 2022 and 2023 to ensure stakeholders are provided with numerous opportunities to give their views and opinions.

### 3. INFORMATION PROVIDED AT CONSULTATION

The consultation ran for 47 days between 25 October and 10 December. Information was posted online using the project's existing website. This information covered – and asked for feedback on - the following key project areas:

- Project rationale - the role of renewable energy in tackling climate change
- The development process – how Nationally Significant Infrastructure Projects are consented
- Scoping – the North Falls scoping report was submitted to the Planning Inspectorate in July 2021
- Consultation with stakeholders – who will be consulted?
- The wind farm – the key components of the project
- Offshore – the offshore site and cable corridor
- Landfall – the landfall search area between Clacton-on-Sea and Frinton-on-Sea
- Onshore – the onshore scoping area being considered for the cable route

## 4. PROMOTING THE CONSULTATION

The consultation launched on 25 October 2021, using the following promotional channels:

- A promotional postcard (see **Appendix A**) was distributed to all residential and business addresses within the following postcodes over a two-week period starting on Monday 25 October. These postcodes were chosen as they offered a good coverage of addresses along the coastal area being assessed for landfall and across the scoping area being assessed for related onshore infrastructure. These postcodes included CO13 9, CO15 2, CO15 3, CO15 4, CO15 5, CO15 6, CO16 7, CO16 8, CO15 1, CO7 7, CO16 0 and CO16 9.
- A media release (see **Appendix B**) was distributed to media outlets (see **Appendix C**) on Monday 25 October, announcing the online consultation and explaining how to access consultation content and provide feedback. The media release was covered by the *Clacton and Frinton Gazette* on Thursday 28 October (see **Appendix D**). A second media release (see **Appendix E**) was distributed on Monday 29 November, by way of reminder that the consultation would be running for a further two weeks and that anybody interested still had to time to find out more and register their feedback.
- An email (see **Appendix F**) was distributed to stakeholders (see **Appendix G**) on Monday 25 October, alerting them to the launch of the consultation, inviting them to take part.
- A letter (see **Appendix H**) was sent to 113 relevant landowners (with land interests within the onshore search area) on Tuesday 26 October. The letter highlighted the launch of the consultation, invited landowners to take part in the consultation and signposted to the project website for more information.
- An advertisement appeared over three consecutive weekly editions of the *Clacton and Frinton Gazette* (see **Appendix I**) on Thursday 28 October, Thursday 4 November and Thursday 11 November.
- Versions of the advertisement also appeared as targeted online advertisements on the *Gazette's* Facebook page (see **Appendix J**) linking back to the project website when clicked by Facebook users. The online advertisements generated 447 click throughs to the project website.

## 5. PUBLICATION OF THE CONSULTATION WEBSITE

The project website ([www.northfallsoffshore.com](http://www.northfallsoffshore.com)) had already gone live in March 2020 explaining the background to the project, details of the project already known and setting out how the project would develop through consultation and into determination.

At consultation launch, new content was added to the site, covering each of the project areas detailed in section 2 of this document. In each case, the online consultation content was accompanied by questions, inviting comments on specific areas of the project (see **Appendix K**), these were:

1. Do you consider renewable energy to be important in tackling the global climate change emergency and meeting the UK's Net Zero ambitions?
2. Do you believe that offshore wind has a key role to play in the UK's energy security?
3. Do you believe offshore wind generation needs to play a larger part in the UK's mix of renewable energy generation sources?
4. Do you have any general comments or suggestions as to how we can be a good neighbour to the local community as we progress our offshore wind farm plans?

5. Do you have any general comments you would like to make about offshore wind in the UK?
6. Do you have any questions about the North Falls development consent application process?
7. Do you have any comments on the North Falls Scoping Report or Planning Inspectorate Scoping Opinion?
8. Do you have any questions or comments in relation to our proposed array (wind farm / turbine) areas?
9. Do you have any questions or comments in relation to our proposed offshore cable corridor (this could be comments on marine ecology, shipping or anything else you feel relevant)?
10. Do you make use of the coastal area between Clacton-on-Sea and Frinton-on-Sea?
11. If yes, what type of activity/activities do you do there?
12. Do you have any comments about the proposal for our cable to landfall between Clacton-on-Sea and Frinton-on-Sea?
13. Do you have any questions or comments about the proposal to use horizontal directional drilling (HDD) to avoid sensitive areas?
14. Please order the issues that you consider to be the most important in relation to the onshore impacts of the wind farm. Please number each one 1 - 10, (1 being the most important to you, and 10 being the least important):
  - Onshore ecology (habitats, flora and fauna)
  - Archeology and cultural heritage
  - Land use and contamination
  - Water quality and flood risk
  - Ground conditions (geology, hydrology and soil)
  - Air quality and noise
  - Socio-economic (local economy and society)
  - Landscape and visual, Tourism and recreation

In addition, an interactive map of the Onshore Scoping Area enabled site visitors to drop pins on specific map points, adding comments or uploading documents by way of location-specific feedback.

Following the receipt of early comments from consultees, a second version of the interactive map was added to the site – enabling visitors to choose and toggle between different map views. The updated choice enabled visitors to choose to leave their comments on a satellite image or an Ordnance Survey style map.

A downloadable information sheet was also provided for members of public and stakeholders who felt more comfortable downloading / printing information for review (**see Appendix L**).

## 6. BRIEFINGS CONDUCTED WITH STAKEHOLDERS

Two councils approached the project to request an individual briefing for members and, where applicable, officers. These were scheduled as online briefing sessions:

### Ardleigh Parish Council

A briefing was conducted by the project team for Ardleigh Parish Council on Monday 29 November. Five councillors attended the briefing. The project team delivered a presentation introducing the project and the current consultation, before hosting a live Q&A session for members. Areas of discussion included:

- The potential size and location of the substation
- The use of land and the assessments that would be undertaken before proposals were progressed
- The potential for sharing infrastructure with other offshore wind projects

### Tendring District Council

A briefing was also conducted by the project team for Tendring District Council on Monday 6 December. Eight councillors attended as well as the Council's Director of Planning, Gary Guiver. Areas of discussion covered:

- Community benefit funding
- The deadline by, and channels through which, members should respond to the current consultation
- The size, type and location of onshore infrastructure – such as the converter station / sub-station
- Suggestions that the Port of Harwich should be utilised as a manufacturing and / or maintenance site

## 7. NUMBER OF RESPONSES RECEIVED

A total of 65 pieces of feedback were received – 48 via the project website and further 17 via the project email address.

## 8. SUMMARY OF RESPONSES RECEIVED

### **1. Do you consider renewable energy to be important in tackling the global climate change emergency and meeting the UK's Net Zero ambitions?**

97% of respondents agreed that renewable energy is important to tackling climate change.

### **2. Do you believe that offshore wind has a key role to play in the UK's energy security?**

87% of respondents believed offshore wind does have a key role to play in the UK's energy security.

### **3. Do you believe offshore wind generation needs to play a larger part in the UK's mix of renewable energy generation sources?**

85% of respondents said that offshore wind generation needs to play a larger part in the UK's mix of renewable energy generation sources.

#### **4. Do you have any general comments or suggestions as to how we can be a good neighbour to the local community as we progress our offshore wind farm plans?**

Keeping local community informed of the project progress and engaging on the proposals were two key requests from this question. When it comes to longer term, there were numerous comments around the need to work with local businesses and community groups, use local suppliers and facilities, create local education programmes and enable jobs for local people. Minimising disruption during construction, for the sake of local people, wildlife and the ecology was also a repeated suggestion. All these will be taken into the next phase of the project.

#### **5. Do you have any general comments you would like to make about offshore wind in the UK?**

The question elicited a number of very positive comments around offshore wind in the UK due to the fact it increases the amount of power coming from renewable sources and decreases the nation's dependence on imported energy through the harnessing of North Sea wind. There were also mentions of using more UK manufacturers and reducing the impact of project's onshore infrastructure. Overall, there was genuine support for offshore wind such as - "As far as I am concerned the more the better" - with very few negative comments.

#### **6. Do you have any questions about the North Falls development consent application process?**

A key theme from this section was around the timeframe and stages of the planning process. To give some details on this: North Falls has completed its first informal consultation and there will be another in 2022, followed by a formal consultation in 2023, as well as ongoing liaison throughout. The project's planning application is due for submission to the Planning Inspectorate - which runs the development consent application process - around mid-2023. The decision on the planning application is anticipated in 2025/26 and, if it is approved, construction would get underway soon after. Future consultations will be promoted in similar ways to this initial consultation although interested parties are encouraged to register their details for regular updates.

#### **7. Do you have any comments on the North Falls Scoping Report or Planning Inspectorate Scoping Opinion?**

As the project has not yet been able to provide a lot of detail of the onshore elements of the project due to a lack of grid connection, respondents were keen to receive further details when they become available. Other issues raised here included the avoidance of ancient woodlands and veteran trees, employment opportunities for local people and potential impacts on migrating birds.

#### **8. Do you have any questions or comments in relation to our proposed array (wind farm / turbine) areas?**

There were limited comments in this section although a number of people expressed they like the way turbines look - "I think wind turbines are wonderful things and a positive sign of green energy". Others wondered about migratory birds, marine ecology and shipping lanes (which will all be factored in to the project plans). One query that came under this section was about the time it takes for a wind farm to payback the CO<sub>2</sub> and energy used in its lifetime. The answer to this - and some of the other questions asked during the consultation, can be found on the Frequently Asked Questions section of the website.

#### **9. Do you have any questions or comments in relation to our proposed offshore cable corridor (this could be comments on marine ecology, shipping or anything else you feel relevant)?**

There were not many comments about the offshore cable route itself however respondents were keen to understand more about where the cable will come to shore and how it might affect the local area. A more refined location for the landfall will be available in 2022 and will be consulted on as part of future consultations. This consultation enabled some early fruitful discussions with the local sailing, boating and golf clubs and communication will continue as the plans progress.



#### **10. Do you make use of the coastal area between Clacton-on-Sea and Frinton-on-Sea?**

95% of respondents said they do make use of the coastal area between Clacton-on-Sea and Frinton-on-Sea.

#### **11. If yes, what type of activity/activities do you do there?**

The area between Clacton-on-Sea and Frinton-on-Sea is most popularly used for general recreation, hiking and rambling, with running/exercising, bird watching and dog walking also commonly enjoyed past times in the area. Marine recreation, golf and fishing were further down in terms of usage among the respondents but still very much part of the mix.

#### **12. Do you have any comments about the proposal for our cable to landfall between Clacton-on-Sea and Frinton-on-Sea?**

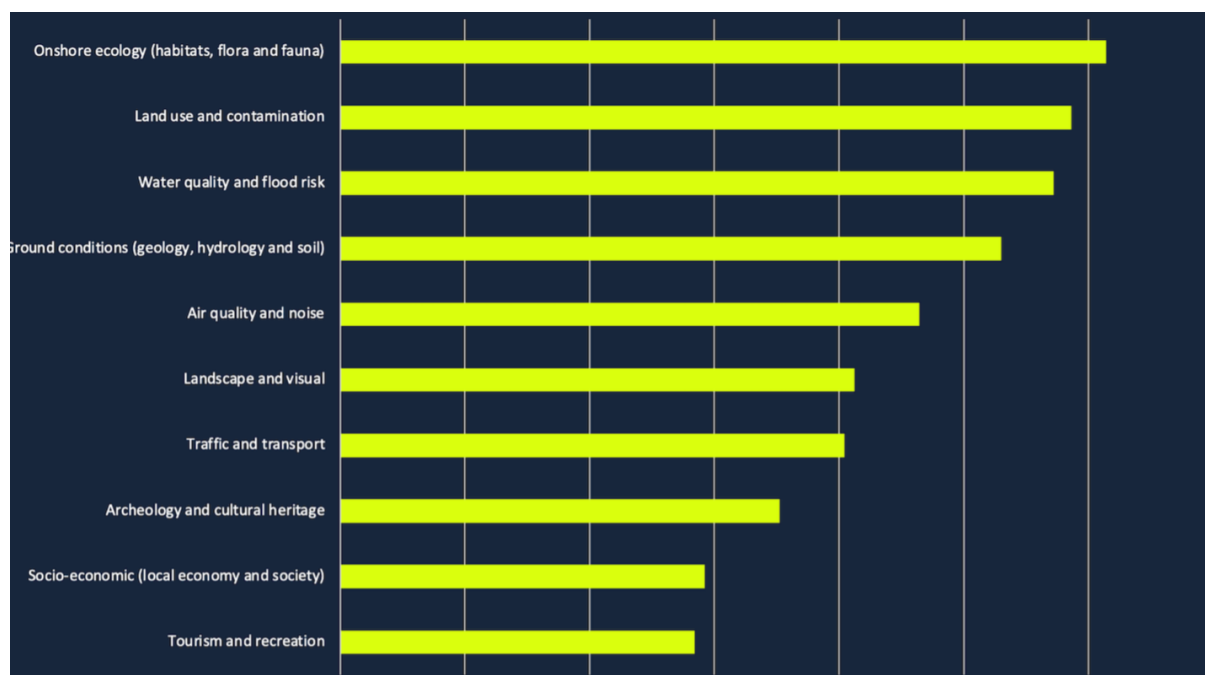
There was a wide range of responses to this question bringing up interesting points and issues for consideration. Of key concern was the wildlife reserve on the coast and potential impacts of the temporary construction works on local wildlife and ecology. Other issues that were brought up and that will be part of the project's assessment and considerations included the sea defences, the area's susceptibility to erosion and flooding, and its military history.

#### **13. Do you have any questions or comments about the proposal to use horizontal directional drilling (HDD) to avoid sensitive areas?**

As this is a commonly used and proven technique employed in many linear construction projects to avoid sensitive areas and fixed features, most respondents agreed it seemed to be the best approach for cable installation to preserve and protect the landfall area. There were however some questions about its impact on local birds, particularly ground nesting species, as well as on wildlife.

#### **14. Please order the issues that you consider to be the most important in relation to the onshore impacts of the wind farm. Please number each one 1 - 10, (1 being the most important to you, and 10 being the least important)**

While all of these topics are important and will be considered as part of our planning process, it is useful to understand what the local community considers most important and relevant. Onshore ecology was found to be of the most concern, followed by land use and contamination and water quality and flood risk. This graph gives an overview of all the responses. (*see next page*)



### 15. Please include details on why you have chosen these issues

In explaining their rankings of the issues, respondents tended to class them as either short term (traffic, noise) or longer term (local economy, visual impacts). Here is a summary of the rationale for the top ranking topics:

*Onshore ecology:* Birds and wildlife were highlighted by numerous people as their key concern with high expectations on the project to protect and mitigate any impacts on them.

*Land use:* This was second in the ranking with varied reasoning including how the substation will look, being sensitive to the surrounding locale, maintaining woodland and ensuring no contamination.

*Flood risk:* Erosion and flood risk were mentioned under this category with numerous respondents confirming the fact the area has issues with both, hence their concern about any impacts which could contribute and the need to mitigate. Water quality in terms of being able to freely enjoy sea swimming was also included.

## APPENDICES

### APPENDIX A – Postcard mailer



North Falls Offshore Wind Farm is being developed in the southern North Sea more than 20km off the UK coast and covers a total area of 150km<sup>2</sup>. It is an extension project to the existing 504 MW Greater Gabbard Offshore Wind Farm.

As well as generating much needed green electricity for the UK, North Falls would bring socio-economic benefits including skilled jobs and opportunities for local industry and businesses.

While the offshore location of the wind farm has been agreed, the location of the onshore infrastructure is uncertain because a grid connection location for the project has not yet been provided by National Grid. However, it is likely this connection will be in North Essex, so through this initial consultation we would like to introduce the project to local people while we wait for confirmation of our grid connection.



#### OUR ONLINE CONSULTATION IS OPEN FROM 25 OCTOBER TO 10 DECEMBER 2021

Our proposals are still at an early stage and there will be further opportunities for local people to input into our plans as we develop them in more detail, giving us your views as part of future consultations and formal consenting process.

This represents the first opportunity to learn about what we're proposing and provide your initial feedback.

This consultation is open from Monday 25 October to Friday 10 December 2021.

[northfallsoffshore.com](http://northfallsoffshore.com)

#### FIND OUT MORE

Go online to find out more about our proposals, submit questions and provide us with your thoughts: [www.northfallsoffshore.com](http://www.northfallsoffshore.com)

#### CONTACT US

Telephone: 0800 254 5340

Email: [contact@northfallsoffshore.com](mailto:contact@northfallsoffshore.com)

Post: FREEPOST North Falls



sse renewables | RWE

## APPENDIX B – Launch media release

### INITIAL CONSULTATION ON WIND FARMS PLANS TO DATE NOW OPEN

- *North Essex communities are being invited to find out more about the proposed offshore wind farm and provide their feedback online via the project's [consultation portal](#)*
- *Consultation on early plans launches on Monday 25 October and runs until Friday 10 December 2021*

### THIS CONSULTATION IS OPEN FROM 25 OCTOBER TO 10 DECEMBER 2021

Please visit [www.northfallsoffshore.com](http://www.northfallsoffshore.com) to find out more and provide your feedback. You can also email your comments to [contact@northfallsoffshore.com](mailto:contact@northfallsoffshore.com).

**THE DEADLINE FOR COMMENTS IS 10 DECEMBER 2021**

People across North Essex and the surrounding region have been invited to provide their feedback on early proposals for North Falls Offshore Wind Farm – a project that is being developed in the southern North Sea more than 20km off the UK coast.

North Falls Offshore Wind Farm covers a total area of 150km<sup>2</sup> and is an extension project to the existing 504 MW Greater Gabbard Offshore Wind Farm. It is being developed by a 50/50 joint venture company owned equally by SSE Renewables and RWE Renewables.

This early consultation on the plans will be conducted online, with information about the project being published on the project website from Monday 25 October. Feedback is then being invited, either through the website or via freepost, by Friday 10 December.

Plans for the offshore wind farm remain at an early stage but the project will generate much needed green electricity for the UK, as well as unlocking a range of socio-economic benefits – such as skilled new jobs and supply chain opportunities for local businesses.

While the offshore site of the wind farm has been agreed, the location of the onshore infrastructure is yet to be determined, because a grid connection location for the project has not yet been provided by National Grid.

However, it is likely this connection will be located in North Essex and this initial consultation is therefore designed to introduce the general principles of the project to local people and gather their

initial feedback. There will be further opportunities for local people to offer their views on the plans in more detail as part of future consultations and the formal consenting process.

**Martin Whyte, Project Manager at North Falls, says:** “North Falls is set to play a key role in the UK’s net zero ambitions, and while we do not yet have an onshore grid connection, we wanted to share our plans to date with local communities. We will be able to give further details next year, however as engagement with local people is important to us, we wanted to introduce the project now, share the information we have and start to gather early input.

“Our need to cut emissions and decarbonise our energy generation network is being brought into sharp focus by the UN Climate Change Conference, COP26, which starts in Glasgow next week. Recent issues around energy security have also highlighted the need to develop further home-grown sources of energy generation here in the UK.

“But the focus of this initial consultation is to introduce the North Falls project to local communities in and around North Essex, share the information we have available at this early stage and give people a first opportunity to give us their views.”

The consultation is open from Monday 25 October to Friday 10 December 2021. To find out more and register feedback, please visit [www.northfallsoffshore.com](http://www.northfallsoffshore.com). Feedback can also be sent by mail to **FREEPOST North Falls**. This is a freepost service, so no stamp is required.

## APPENDIX C – Media list

- The Essex Enquirer
- The Beach
- Essex Life
- Planet Radio / Greatest Hits
- Heart East Anglia / Essex
- Coastal Scene
- Harwich Standard
- Anglia Press Agency
- Ipswich24
- Daily Gazette
- BBC Radio Essex
- BBC Radio Suffolk
- East Anglia News Service
- BBC East
- BBC Norfolk
- North Norfolk News
- Anglia Business
- Business in East Anglia
- Haverhill Echo
- Suffolk Free Press
- Daily Gazette
- BBC Radio Essex
- BBC East
- ITV Anglia
- ITV News
- Businesseast Monthly
- East Anglia in Business
- East Anglian Daily Times (Essex)
- Lowestoft Journal
- Offshore Update
- East Anglian Daily Times (East Suffolk)
- East Anglian Daily Times
- East Anglian Daily Times (Essex)
- East Anglian Daily Times (Essex)
- ITV Anglia
- East Anglian Daily Times and Ipswich Star
- Insight Energy (Norfolk and Suffolk Unlimited)
- Essex Wire (Business News)
- Renewable UK
- EEEGR
- 4C Offshore
- A Word About Wind
- Acuris (Sparkspread)
- AltEnergyMag.com
- Argus Media
- Better Society Network
- Bloomberg
- Bloomberg NEF
- BusinessGreen
- Carbon Brief
- Centaur Media
- Clean Energy Pipeline
- Clean Technology Business Review
- Cleantech Magazine
- Climate Home News
- edie.net
- edie.net
- Energy Acuity
- Energy Central
- Energy Live News
- Future Net Zero
- Energy Live News
- Energy Live News
- Energy Rev
- Energy Voice
- Energy Wire
- Energy World
- Environment and Energy Management News
- Environmental Finance
- FORESIGHT Climate & Energy
- Freelance
- Funds Europe
- Greenbiz.com
- Greenbiz.com
- Greenwire
- Green Tech Media
- Green Tech Media
- ICIS
- ICIS Energy
- ijGlobal
- IJ Global
- Industry Projects & Technology
- Infra News and Information Group
- Infrastructure Investor
- inspiratia
- Institutional Asset manager
- Institutional Investor
- Investment Week
- IPE
- Low Carbon Energy Investor
- Merger Market
- New Scientist



- North American WindPower
- Offshore Energy Today
- Offshore Engineer
- Offshore Wind Biz
- Offshore Wind Engineering
- Offshore Wind Journal
- OGV Energy
- Private Equity International
- Private Equity Wire
- Private Equity Wire
- Project Finance International
- Recharge
- Renewable Energy
- Renewable Energy Focus
- Renewable Energy Technology
- Renewable Energy World Magazine
- Renewable UK
- Renewables Investor
- ReNews
- reNEWS
- Scottish Energy News
- Sparksread
- SteelGuru
- Sun & Wind Energy
- Utility Week
- Wind Energy Network
- Wind Energy Update
- Wind Tech International
- Windpower Monthly

## APPENDIX D – Media Coverage

www.clactonandfrintongazette.co.uk

October 28, 2021

NEWS 7

### Plans unveiled for £1.5bn wind farm off north Essex coast

PLANS have been unveiled for a £1.5 billion extension to a major wind farm off north Essex's coastline. The application will, if successful, see up to 71 wind turbines added to the Greater Gabbard Offshore Wind Farm, located more than 20km off the north Essex coast, in the North Sea. The existing site already boasts 140 wind turbines within its fleet. Plans for the new North Falls Offshore Wind Farm are now in the early stages with the aim of starting construction in 2025 and the project being operational by 2030. A cashpot of £1.5 billion of potential investment has been made available with early projections suggesting the farm will supply more than 400,000 UK homes with clean, renewable power.

The developers, a joint venture company owned equally by SSE Renewables and RWE, have now launched a consultation inviting residents to have their say on the plans. Martin Whyte, project manager at North Falls, said: "North Falls is set to play a key role in the UK's net zero ambitions, and while we do not yet have an onshore grid connection, we wanted to share our plans with communities. "We will be able to give further details next year, however, as engagement with people is important to us, we wanted to introduce the project now, share the information we have and start to gather early input." The consultation runs until December 10. To have your say, visit consultation.northfalls offshore.com.



THE FUTURE: The Greater Gabbard wind farm off the coast of north Essex, which could see a £1.5 billion extension if proposals are approved

### Woman drunk in charge of child

A WOMAN has been ordered to carry out unpaid work after she admitted drink driving and being drunk in charge of a child.

Hannah Rammell, 28, admitted the offences after she got behind the wheel of a Peugeot in Stratford Road, Clacton, while more than double the legal alcohol limit.

She had 98mcg of alcohol in 100ml of breath. The legal limit is 35mcg.

On the same day, April 12, she was also found to be drunk in charge of a child.

Rammell, of Broadway, Silver End, also admitted driving without insurance and taking a motor vehicle without the owner's consent.

She was ordered to carry out 120 hours of unpaid work and was banned from driving for 28 months.

### Boy stole bike

A CLACTON teenager has been ordered to pay a fine after admitting stealing a bike from a train station.

The boy, 15, who cannot be named for legal reasons, snatched a bike from Stevenage Railway Station on October 13 last year.

His guardian must pay £22 to fund victim services.

## Teenager 'didn't recover' from the loss of friend

Martti, 15, was 'generous and caring'

By Tom Gully

tom.gully@frintongazette.co.uk

A TEENAGER known for his "generous and caring" nature died after becoming "overwhelmed" with grief at the loss of a close friend.

Martti Ojandu, a popular student at Tendring Technology College's Frinton campus, died at home in May, aged 15.

The Year 10 student, described as a fun-loving and sensitive boy who had a heart of gold, had struggled after the recent loss of a close friend.

An inquest at Chelmsford Coroner's Court was told during a walk home from school with two friends on May 18, nothing out of the ordinary was noted in his behaviour.

At about 3.30pm he arrived at home and a discussion followed with his mother about recent behavioural issues at school. The inquest heard at 4.22pm, Martti's mother, sister and her two children left the home to visit a soft play area before moving on to Clacton pier, while Martti remained at home to complete some chores.

When his family returned home, they found him unresponsive in an upstairs bedroom.

Det Sgt Luke Baldwin said: "CPR had been commenced by family members, supported by a neighbour who continued until paramedics arrived at the scene and continued."

He was officially pronounced dead at 8.36pm.

The inquest heard Martti had exchanged messages with



MUCH LOVED: Martti Ojandu was described as a caring and generous boy

friends that day, in which he said he was "feeling low and might do something stupid".

A message from a friend at 6.20pm, which said "don't do anything stupid, you've always got me" went unread.

The inquest was told Martti had struggled following the death of fellow Tendring Technology College student Elliott Willis, aged 15, in March.

Following the tragedy, Martti and a group of friends had banded together to offer each other support.

Senior Coroner Lincoln Brookes said it had "been like any other day" when Martti returned home from school.

Recording a conclusion Martti deliberately took his own life, Mr Brookes said it was clear from social media messages Martti "still hadn't really recovered at all from the loss of his friend

only a couple of months before-hand".

He added: "I also find his difficulty with that overcame him in the late afternoon and early evening of May 18 and he acted upon dark thoughts which overwhelmed him."

In a letter, Martti's mother Tina said he was born in Estonia, where he lived until 2013 when he moved to the UK. In 2016, he became an uncle to his nephew and in 2018, an uncle to his young niece.

Tina said: "He loved both of those children very much. He was proud to be their best and only uncle."

Martti was also taking part in the mentoring programme offered by the Lads Need Dads charity.

The scheme, which Martti joined in 2018, is designed to empower young men who have had limited access to a male role model to become motivated and capable.

Paying tribute, Sonia Shaljean, founder of the organisation, said: "He was generous and caring and had a gift for making people smile."

"From an early age he was a young carer, helping care for his mum, and then the past couple of years, his young nieces and nephews who came to live with them."

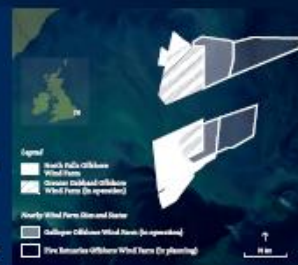
"He was popular with our mentors as his engaging and cheeky personality was infectious, and he never moaned and always presented as an optimist."

■ To contact the Samaritans, call 0800 094 5717.

### HAVE YOUR SAY ON OUR PROPOSALS FOR NORTH FALLS OFFSHORE WIND FARM

North Falls, an extension project to the existing Greater Gabbard Offshore Wind Farm, is being developed in the southern North Sea more than 20km off the East Anglia coast.

The project proposals are at an early stage however to enable early input, the team has launched an initial online consultation, inviting comments on the plans to date.



THIS CONSULTATION IS OPEN FROM 25 OCTOBER TO 10 DECEMBER 2021

Please visit [www.northfalls offshore.com](http://www.northfalls offshore.com) to find out more and provide your feedback. You can also email your comments to [contact@northfalls offshore.com](mailto:contact@northfalls offshore.com).

THE DEADLINE FOR COMMENTS IS 10 DECEMBER 2021

IF YOU HAVE ANY QUESTIONS OR WOULD LIKE MORE INFORMATION PLEASE CONTACT US:

Telephone: 0800 254 5340

Email: [contact@northfalls offshore.com](mailto:contact@northfalls offshore.com)

Post: FREEPOST North Falls





## Appendix E - Reminder media release

### TWO WEEKS LEFT TO COMMENT ON NORTH FALLS INTRODUCTORY CONSULTATION

- *Two weeks to go for North Essex communities wanting to provide feedback regarding the proposed wind farm*
- *Online consultation on early plans for the project runs until Friday 10 December 2021 via the [consultation portal](#)*

**The first consultation for the proposed southern North Sea offshore wind farm, North Falls, has two weeks left to run before it closes on Friday 10 December.**

The team from North Falls Offshore Wind Farm encourages people from North Essex and surrounding areas to provide feedback on early proposals for the project that is being developed across a total area of 150km<sup>2</sup> located more than 20km off the UK coast.

The consultation opened in October and has been running for five weeks, with more than 50 responses received to date offering opinions and insights into the consultation itself, offshore wind technology and on specifics of the project including possible landfall locations between Clacton and Frinton-by-the-Sea, construction methods and how the local environment will be taken into account.

**Martin Whyte, Project Manager at North Falls, said:** "Although the location of the onshore grid connection is not yet known, it is likely to be in North Essex and that is why we are focusing this first consultation in that area, encouraging nearby communities to give us the benefit of their local knowledge upfront.

"While there will be further opportunities for local people to offer their views in future detailed consultations and as part of the formal consenting process, by seeking early inputs we can identify potential concerns or issues at an immature stage of development."

The proposed project is an extension to the existing Greater Gabbard 504MW offshore wind farm and will generate much needed green electricity for the UK, while also contributing towards the economy by providing benefits such as skilled new jobs and supply chain opportunities for local businesses.

Feedback is invited, either through the [dedicated consultation website](#) or via freephone, email or freepost by Friday 10 December.

North Falls Offshore Wind Farm is being developed by a 50/50 joint venture company owned equally by SSE Renewables and RWE Renewables.

## APPENDIX F – Stakeholder email

As a valued local stakeholder, I am writing to invite you to take part in our first online consultation to provide feedback on the early proposals for North Falls Offshore Wind Farm, being developed in the southern North Sea more than 20km off the UK coast.

North Falls Offshore Wind Farm covers a total area of 150km<sup>2</sup> and is an extension project to the existing 504 MW Greater Gabbard Offshore Wind Farm. It is being developed by a 50/50 joint venture company owned equally by SSE Renewables and RWE Renewables.

From today - Monday 25 October - we will be running an online consultation with feedback being invited, either through our website or via freepost, by Friday 10 December.

Plans for the offshore wind farm are at an early stage and while the offshore site of the wind farm has been agreed, the location of the onshore infrastructure is yet to be determined as a grid connection location for the project has not yet been provided by National Grid.

It is likely this connection will be located in North Essex and this initial consultation is therefore designed to introduce the general principles of the project to local people and gather preliminary feedback. There will be further opportunities to offer views on more detailed plans as part of future consultations.

You can find out more by visiting [Introducing North Falls - North Falls Offshore Wind Farm Consultation](#) – where you will be able to register and provide your valuable input and feedback. You can also access it via the website.

We would be very grateful if you could take the time to review the proposals to date and give us your views.

## **APPENDIX G – Stakeholders contacted at consultation launch**

### **Essex County Council**

- Cllr Mark Stephenson
- Cllr Mick Skeels
- Cllr Paul Honeywood
- Cllr Alan Goggin
- Cllr Mark Platt
- Cllr Ivan Henderson
- Cllr Dan Land
- Cllr Carlo Guglielmi
- Cllr Lesley Wagland

### **Tendring District Council – Ward members**

- Cllr Neil Stock
- Cllr Peter Harris
- Cllr Jeff Bray
- Cllr Nick Turner
- Cllr Terry Allen
- Cllr Kanagasundaram King
- Cllr Colin Winfield
- Cllr Michael Bush
- Cllr Delyth Miles
- Cllr Lynda McWilliams
- Cllr Gary Scott
- Cllr Ann Wiggins
- Cllr Alan Coley
- Cllr Valerie Guglielmi
- Cllr Zoe Fairley
- Cllr Dan Casey
- Cllr James Codling
- Cllr Mary Newton
- Cllr Peter Cawthron
- Cllr Alex Porter
- Cllr John Chittock
- Cllr Gina Placey
- Cllr Paul Clifton

### **Parish Council – Chairs**

- St Osyth Parish Council - Sonia Grantham
- Great Bentley Parish Council - Pippa Dennitts
- Weeley Parish Council - Christine Hamilton
- Little Bentley Parish Council - Philip Mariano Suarez
- Tendring Parish Council - Ted Edwards
- Great Oakley Parish Council - Yvonne Bailey
- Wix Parish Council - Guy Nelson
- Thorrington Parish Council - Pam Sadler
- Frating Parish Council - Terry Cuthbert
- Alresford Parish Council - Frank Belgrove
- Elmstead Parish Council - John Gray
- Great Bromley Parish Council - Fred Nicholls

- Little Bromley Parish Council - Jonathan Buxton
- Mistley Parish Council - Charlotte Howell
- Bradfield Parish Council - Kreon Wynn
- Beaumont Parish Council - Alan Roebuck
- Thorpe-le-Soken Parish Council - Daniel Land
- Frinton and Walton Parish Council - Ann Oxley
- Ramsey and Parkeston Parish Council - Robert Passmore

## **MPs**

- Harwich and North Essex - Bernard Jenkin MP
- Clacton - Giles Watling MP
- Suffolk Coastal - Therese Coffey MP
- South Suffolk - James Cartledge MP

## **Suffolk County Council**

- Planning Officer - Andy Rutter
- Development Manager - Graham Gunby

## **East Suffolk Council**

- Senior Energy Projects Officer - Grahame Stuteley

## **Essex County Council**

- Principal Planning Officer (Major Development and New Communities) - Mark Woodger
- Chief Executive Officer - Gavin Jones
- Programme manager - Nicholas French
- Growth and Development Manager - Matthew Thomas

## **Tendring District Council**

- Regeneration Manager - Tom Gardiner
- Graham Nourse – Planning Manager

**In addition – and acknowledging that this was not a statutory consultation - the following organisations were contacted in their capacity as statutory stakeholders:**

- |   |  |
|---|--|
| • Marine Management Organisation              | • Maritime and Coastguard Agency                                   |
| • Marine Management Organisation              | • Maritime and Coastguard Agency                                   |
| • Marine Management Organisation              | • Maritime and Coastguard Agency                                   |
| • Marine Management Organisation              | • Port of London Authority (PLA)                                   |
| • Marine Management Organisation              | • Harwich Haven Authority (HHA)                                    |
| • Marine Management Organisation              | • Harwich Haven Authority (HHA)                                    |
| • Marine Management Organisation (NeuConnect) | • Port of Felixstowe   |
| • Marine Management Organisation (NeuConnect) | • Harwich International Port                                       |
| • The Crown Estate                            | • HM Coastguard  |
| • The Crown Estate                            | • HM Coastguard  |
| • The Crown Estate                            | • Kent & Essex Inshore Fisheries and Conservation Authority (IFCA) |
| • Natural England                             | • Kent & Essex Inshore Fisheries and Conservation Authority (IFCA) |
| • Natural England                             | • Historic England   |
| • Natural England                             | • Historic England   |

- Historic England
- JNCC
- Ministry of Defence - Offshore Safeguarding team
- Defence Infrastructure Organisation
- Trinity House
- Trinity House
- Civil Aviation Authority
- Chamber of Shipping
- Chamber of Shipping
- NATS Safeguarding
- RSPB
- RPSB
- Whale and Dolphin Conservation Society
- The Wildlife Trusts
- The Wildlife Trusts
- The Wildlife Trusts
- Essex Wildlife Trust
- Essex Wildlife Trust
- The Woodland Trust
- National Trust?
- Essex Coast Organisation
- Royal National Lifeboat Institution
- Royal Yachting Association
- Royal Yachting Association
- Cruising Association
- Cefas
- Cefas
- ABP Ports
- UK Hydrographic Office
- UK Hydrographic Office
- UK Hydrographic Office
- UK Hydrographic Office
- UK Hydrographic Office
- UK Hydrographic Office
- Kingfisher
- Local fisheries
- National Federation of Fishermen's Organisations
- National Federation of Fishermen's Organisations
- Environment Agency
- Network Rail Infrastructure Ltd
- 
- Relevant Statutory Undertakers
- National Grid Electricity Transmission
- National Grid Electricity Transmission
- NeuConnect Britain Ltd
- NeuConnect Britain Ltd
- NeuConnect Britain Ltd
- BritNed Development Ltd
- BritNed Development Ltd
- Century Link
- Century Link
- National Grid
- National Grid
- National Grid
- Royal National Lifeboat Institute
- Police, Fire and Crime Commissioner for Essex
- Police, Fire and Crime Commissioner for Essex
- Tendring District Council
- Frinton and Walton Parish Council
- Thorpe-le-Soken Parish Council
- Little Clacton Parish Council
- Essex County Council
- Highways England
- Public Health England
- Health and Safety Executive
- NHS England
- North East Essex Clinical Commissioning Group
- Coal Authority
- Canal and River Trust
- Forestry Commission (East and Midlands)
- North Essex Partnership NHS Foundation Trust
- East Suffolk and North Essex NHS Foundation Trust
- East Of England Ambulance Service NHS Trust
- Colchester Borough Council
- Babergh District Council
- Suffolk County Council
- Hertfordshire County Council
- Cambridgeshire County Council
- Southend-on-Sea Borough Council
- Thurrock Council
- London Borough of Enfield
- London Borough of Waltham Forest
- London Borough of Redbridge
- London Borough of Havering
- Royal Mail
- NATS
- Homes England
- Great Oakley Parish Council
- Great Bentley Parish Council
- Elmstead Parish Council
- Great Bromley Parish Council
- Ardleigh Parish Council
- Mistley Parish Council
- Lawford Parish Council
- Tendring Parish Council
- Beaumont-cum-Moze Parish Council
- Bradfield Parish Council
- Wix Parish Council
- Frating Parish Council
- Weeley Parish Council
- Little Bentley Parish Council
- Little Bromley Parish Council
- St. Osyth Parish Council
- Highways England Historical Railways
- Estate

- Affinity Water
- Anglian Water
- Cadent Gas Limited
- Last Mile Gas Ltd
- Energy Assets Pipelines Limited
- ES Pipelines Ltd
- ESP Networks Ltd
- ESP Pipelines Ltd
- ESP Connections Ltd
- Fulcrum Pipelines Limited
- Harlaxton Gas Networks Limited
- GTC Pipelines Limited
- Independent Pipelines Limited
- Indigo Pipelines Limited
- Leep Gas Networks Limited
- Murphy Gas Networks limited
- Quadrant Pipelines Limited
- National Grid Gas Plc
- Scotland Gas Networks Plc
- Southern Gas Networks Plc
- Greater Gabbard Offshore Wind Limited
- Galloper Wind Farm Limited
- Five Esutaries Offshore Windfarm Limited
- Eclipse Power Network Limited
- Last Mile Electricity Ltd
- Energy Assets Networks Limited
- ESP Electricity Limited
- Forbury Assets Limited
- Fulcrum Electricity Assets Limited
- Harlaxton Energy Networks Limited
- Independent Power Networks Limited
- Indigo Power Limited
- Leep Electricity Networks Limited
- Murphy Power Distribution Limited
- The Electricity Network Company Limited
- UK Power Distribution Limited
- Utility Assets Limited
- Vattenfall Networks Limited
- Eastern Power Networks Plc
- UK Power Networks Limited
- Diamond Transmission Partners
- Galloper Limited
- Greater Gabbard OFTO Plc
- National Grid Electricity Transmission Plc
- TC Gunfleet Sands OFTO Ltd
- Medway Council
- Maldon District Council
- Rochford District Council

## APPENDIX H – Letter to landowners

Following our earlier correspondence to you regarding the North Falls Offshore Wind Farm Project, we are now writing to invite you to take part in our first online consultation to provide feedback on the early proposals for North Falls Offshore Wind Farm.

As you are aware this is an extension project to the existing 504MW Greater Gabbard Offshore Wind Farm and its final capacity will generate enough power to supply the electricity needs of at least 400,000 UK homes. It is being developed by a 50/50 joint venture company owned equally by SSE Renewables and RWE Renewables. The project is planned to be operational towards the end of the decade, playing a key role in the UK Governments ambition to achieve 40GW of installed offshore wind capacity by 2030.

Plans for the project are at an early stage and while the offshore site of the wind farm has been agreed, the location of the onshore infrastructure is yet to be determined as a grid connection location for the project has not yet been provided. It is likely the connection will be in North Essex with the cables brought to shore between Holland-on-Sea and Frinton-on-Sea.

This initial consultation is therefore designed to introduce the general principles of the project to local people and gather preliminary feedback. There will be further opportunities to offer views on more detailed plans as part of future consultations during the Development Consent Order application process.

From Monday 25<sup>th</sup> October 2021, North Falls will be running an online consultation with feedback being invited by Friday 10<sup>th</sup> December, either through the project's website or via freepost.

You can find out more by visiting [www.northfallsoffshore.com](http://www.northfallsoffshore.com) where you will be able to register and provide your valuable input and feedback. Your comments on the proposals at this stage would be much appreciated.

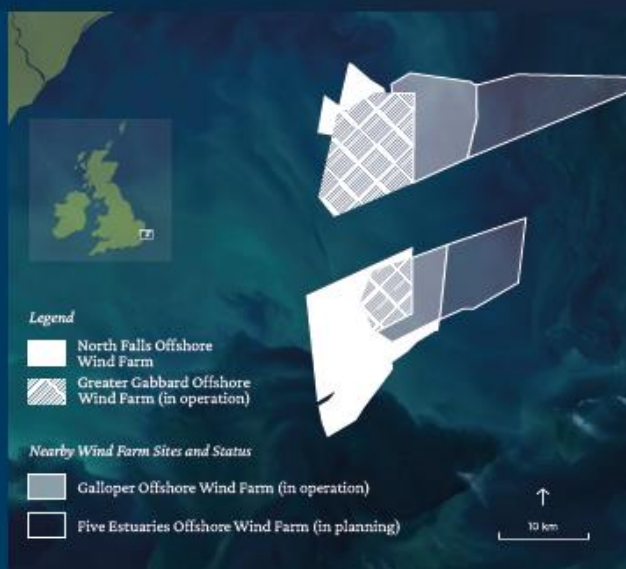


## APPENDIX I – Advertisement in the *Clacton and Frinton Gazette*

# HAVE YOUR SAY ON OUR PROPOSALS FOR NORTH FALLS OFFSHORE WIND FARM

North Falls, an extension project to the existing Greater Gabbard Offshore Wind Farm, is being developed in the southern North Sea more than 20km off the East Anglia coast.

The project proposals are at an early stage however to enable early input, the team has launched an initial online consultation, inviting comments on the plans to date.



**THIS CONSULTATION IS OPEN FROM  
25 OCTOBER TO 10 DECEMBER 2021**

Please visit [www.northfallsoffshore.com](http://www.northfallsoffshore.com) to find out more and provide your feedback. You can also email your comments to [contact@northfallsoffshore.com](mailto:contact@northfallsoffshore.com).

**THE DEADLINE FOR COMMENTS IS 10 DECEMBER 2021**

**IF YOU HAVE ANY QUESTIONS OR WOULD LIKE  
MORE INFORMATION PLEASE CONTACT US:**

Telephone: 0800 254 5340


Email: [contact@northfallsoffshore.com](mailto:contact@northfallsoffshore.com)

Post: FREEPOST North Falls







## APPENDIX J – Online advertisements

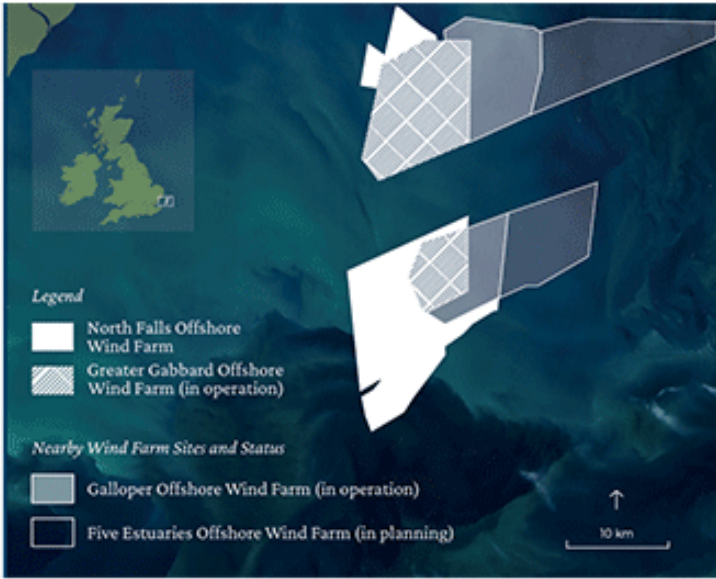

**Newsquest Digital with North Falls Offshore Wind Farm**  
 Sponsored ·

The consultation on Proposals for the North Falls Offshore Wind Farm is OPEN from 25th October to 10th December 2022. The team has launched an initial online consultation, inviting comments on the plans to date. Get in touch for more information: Telephone: 0800 254 5340, Email: [contact@northfallsoffshore.com](mailto:contact@northfallsoffshore.com)



**NORTH FALLS**  
Offshore Wind Farm





**Legend**

- North Falls Offshore Wind Farm
- Greater Gabbard Offshore Wind Farm (in operation)




**Nearby Wind Farm Sites and Status**

- Galløper Offshore Wind Farm (in operation)
- Five Estuaries Offshore Wind Farm (in planning)

10 km

[www.northfallsoffshore.com](http://www.northfallsoffshore.com)  
**Have your say on our Proposals for the North Falls Offshore Wind Farm**  
 Visit the website to find out more and provide your feedback.

Contact us

 Like
  Comment
  Share

## APPENDIX K - Consultation website screen shots

### Consultation now open

---

North Falls Offshore Wind Farm, an extension project to the existing 504 MW Greater Gabbard Offshore Wind Farm, is being developed in the southern North Sea more than 20km off the UK coast.

The site is in two parts which together cover a total area of 150km<sup>2</sup>. North Falls is being developed by North Falls Offshore Wind Farm Limited, a 50/50 joint venture company owned by SSE and RWE.

We are now seeking your views on the proposal so far as part of our first public consultation about the project. **This online portal will be open for feedback from Monday 25 October until Friday 10 December 2021.**

### Initial consultation

---

This is an initial online consultation to introduce North Falls and invite comments on how we intend to progress the project and on the proposals to date.

There will be further consultations, including a statutory consultation, and opportunities to engage with us as the development continues, however through this introductory consultation we hope to give stakeholders the opportunity to learn more about the project and for us to gain an early insight into your opinions and thoughts.

## Introduction

Together SSE Renewables and RWE Renewables have been active in the East Anglia region since the organisations developed the Greater Gabbard Offshore Wind Farm, located 25km off the coast of Suffolk in the North Sea. The 504 megawatt (MW) project started construction in 2008 and at the time was the world's largest offshore wind farm. It has 140 wind turbines and was commissioned in September 2012. North Falls is an extension project to Greater Gabbard.



## Extensions overview

---

In February 2017 The Crown Estate, manager of the seabed, launched a process for wind farm operators to apply for extensions to their existing projects. This opportunity closed in May 2018, with eight project applications received.

A plan level Habitats Regulations Assessment (HRA), was undertaken to assess the possible impact of the proposed wind farm extensions on relevant nature conservation sites of European importance.

Expert independent advisors were utilised and there were consultations with the statutory marine planning authorities, the statutory nature conservation bodies and a number of non-governmental stakeholders.

In August 2019, The Crown Estate announced the conclusion of the HRA confirming that seven of the 2017 extension application projects, representing a total generating capacity of 2.85GW, would progress to the award of development rights, including what is now called North Falls Offshore Wind Farm.

The Agreement for Lease between North Falls Offshore Wind Farm and The Crown Estate was signed in Autumn 2020 and the project is now in the early stages of development with the aim of achieving a Development Consent Order (DCO) in 2025.

Construction would then take place in the latter part of the decade with a view to the project being operational by 2030, aligned to Government targets.

## Developing North Falls

### Nationally significant infrastructure project

As a large scale energy project, North Falls is classified as a nationally significant infrastructure project (NSIP). Developers intending to construct a NSIP must obtain 'development consent' under procedures governed by the Planning Act 2008. Where a development consent is granted, it is made in the form of a development consent order (DCO).

The agency responsible for operating the planning process for NSIPs is the Planning Inspectorate (PINS). PINS examines applications for development consent and will make a recommendation to the Secretary of State, who will make the decision on whether to grant or to refuse development consent.

For North Falls this will be the Secretary of State at the Department of Business, Energy and Industrial Strategy.

### The National Infrastructure Planning process

The Planning Act 2008 process was introduced to streamline the decision-making for major infrastructure projects like North Falls, to make it fairer and faster for communities and applicants alike. To find out more about the process please visit the PINS website which gives a simple explanation of the stages of their process. We are currently in the pre-application stage of development.

### The North Falls process

Now in development, North Falls is focussed on preparing our application for development consent.

#### Environmental impact assessment

The core of our current work is carrying out an environmental impact assessment (EIA). The EIA is a systematic approach to assessing the environmental, social and economic effects arising from our proposals. It will set out mitigation measures to reduce adverse impacts plus the results of further assessments with these mitigation measures applied.

The EIA provides a consistent approach to both the onshore and offshore development proposals.

#### NATIONAL INFRASTRUCTURE PLANNING



#### Feedback Questions

6. Do you have any questions about the North Falls development consent application process?

Please add your comments

+ ADD TO MY FEEDBACK

### Consultation

Consultation is a key element of the development process and will be crucial to the progress of the EIA. The project team will ensure that stakeholders are engaged in the development and have the opportunity to comment on the proposals at key decision making points.

The preparation and refinement of the North Falls proposals will be an iterative process. Those with comments or suggestions about the project can provide input throughout the development phase. However pre-application consultation periods, such as this, will be the main opportunity for stakeholders to review the plans, provide comments, submit feedback and have an influence on elements of the process or shape the project. At these defined consultation periods North Falls will ask for input related to specific elements on its proposals where stakeholders are will be able to offer valuable insights.

### Preliminary environmental information report and environmental statement

The preliminary results of the EIA are set out in what is called a preliminary environmental information report (PEIR). This document will form the basis of a future statutory consultation on the North Falls proposals and acts as a status report on both the EIA process and on the progress of the preparation of the development consent application.

The PEIR is a technical document covering the full range of what has been assessed, its impacts and proposed mitigations. Feedback given on the PEIR will be used to produce the final document required as part of the development process, the North Falls Environmental Statement. This document will accompany the final application when it is submitted to the Planning Inspectorate.

## Rationale for North Falls

Scientists continue to see changes in the Earth's climate in every region and across the whole climate system, including continued rise in sea levels and dramatic climate events. The August 2021 Intergovernmental Panel on Climate Change (IPCC) Report, said that many of the changes are unprecedented in thousands, if not hundreds of thousands of years and that the role of human influence on the climate system is undisputed.

However, strong and sustained reductions in emissions of carbon dioxide (CO<sub>2</sub>) and other greenhouse gases would limit climate change. Some benefits - such as for air quality - would come quickly, while it could take 20 to 30 years to see global temperatures stabilize.

Offshore wind energy, generating clean, green electricity that powers millions of homes and businesses without burning fossil fuels, has a vital role to play in the fight against climate change. While reducing greenhouse gases is at the core, the onus is also on developers to ensure new offshore wind farms are built responsibly, sustainably and employing the most efficient technology.

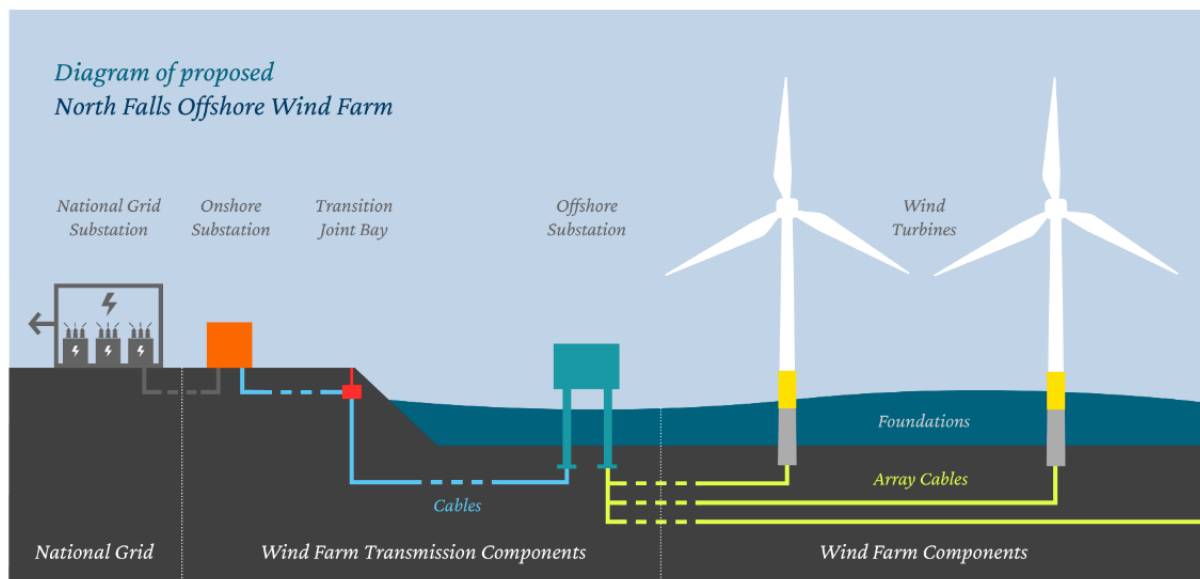


Diagram is a simplified representation only and not to scale. Actual distances will be dependent on geography of the project.

## Offshore Wind in the UK

---

In the past 10 years the capacity of the UK's offshore wind farms has increased from only 1 gigawatt (GW) in 2010 to almost 10.5GW in mid-2021. The costs per megawatt hour of offshore wind have been driven down by almost two-thirds, the sector directly employs more than 26,000 people, and it supplies on average around 15% of the nation's electricity. In short, the offshore wind sector has become one of Britain's most laudable industrial success stories.

However it is still a sector in its relative youth, with plenty of potential for further growth in the UK and export internationally. In 2020, the UK Government announced the ambition for the UK to install 40GW by 2030. This ambition aligns to the Climate Change Act, which commits the UK to achieving net zero by 2050.

The vision therefore is for offshore wind to generate enough electricity to power every home in the UK. This plan has emerged as a central plank of Britain's green recovery after the COVID-19 crisis, ensuring the nation "builds back better" as it works towards its 2050 climate goals. In October 2021, the UK Government released its Net Zero Strategy setting out how the nation will deliver on its commitment to reach net zero emissions by 2050.

While the green agenda needs to clear multiple hurdles to deliver on the promise of billions in investment and much-needed green jobs, projects like North Falls will play an essential role in reaching the targets. We intend to work closely with all our stakeholders, Government, local communities and the supply chain to ensure we make a positive contribution to the nation's net zero ambitions and economic prosperity.

---



## Feedback Questions

---

1. Do you consider renewable energy to be important in tackling the global climate change emergency and meeting the UK's Net Zero ambitions?

☐ Yes

☐ No

2. Do you believe that offshore wind has a key role to play in the UK's energy security?

☐ Yes

☐ No

3. Do you believe offshore wind generation needs to play a larger part in the UK's mix of renewable energy generation sources?

☐ Yes

☐ No

4. Do you have any general comments or suggestions as to how we can be a good neighbour to the local community as we progress our offshore wind farm plans?

Please add your comments

5. Do you have any general comments you would like to make about offshore wind in the UK?

Please add your comments



## Benefits of the Project

As well as helping to protect the environment and contributing to the UK's net zero ambitions, North Falls will bring numerous local benefits by way of jobs, local economy and community involvement. As an extension project, North Falls would aim to emulate the initiatives of its sister project Greater Gabbard and therefore create similar, if not greater, socio-economic benefit.

### Greater Gabbard Benefits

Greater Gabbard represented a total investment of around £1.5 billion and a new facility was constructed in Lowestoft, Suffolk for the project's operations & maintenance base.

Around 100 long-term, skilled jobs were created to operate and maintain the wind farm, with 95% of those recruited from the local area.

These roles were in addition to the hundreds of jobs created during construction.

Greater Gabbard has engaged 10 apprentices since the start of operation, recruited eight pipeline trainees, offered junior engineer roles and employed ex-fishermen on crew transfer vessels as part of the drive to find locally skilled people to fill roles.

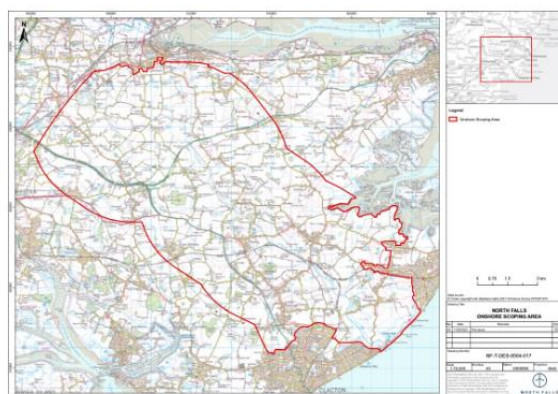
Since starting operation, the project has invested more than £250,000 in community funds and local training initiatives.

## Scoping the Project

North Falls submitted a scoping report to the Planning Inspectorate in July 2021. This presented early project proposals and described our development process including how any potential impacts to the existing environment will be assessed. By seeking early comments on the North Falls Scoping Report, the project team aims to ensure that the most robust and thorough environmental statement will be submitted to support our development consent order application in 2023.

The North Falls Scoping Report includes the most comprehensive picture of the project proposals to date. This consultation highlights key environmental and other areas of interest however it is recommended to read that report if you wish to gain an in-depth understanding of the proposed approach and the current proposals from the work to date.

The feedback received on this report from the relevant local planning authorities and statutory consultees resulted in a scoping opinion which is now available to be read here.



[ONSHORE SCOPING AREA PDF](#)



[OFFSHORE PROJECT AREA PDF](#)



[SCOPING REPORT](#)



[SCOPING OPINION](#)



### Feedback Questions

7. Do you have any comments on the North Falls Scoping Report or Planning Inspectorate Scoping Opinion?

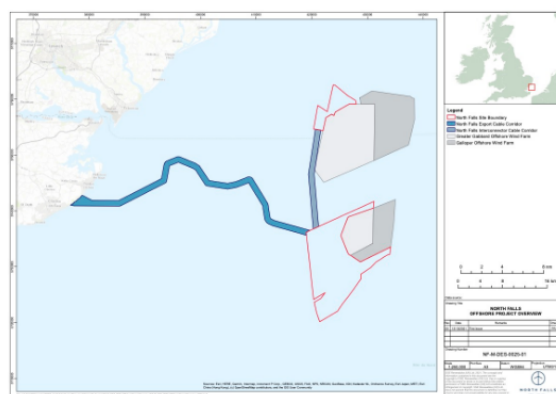
Please add your comments

[+ ADD TO MY FEEDBACK](#)

## The Project

The project description for North Falls will be developed as work progresses, taking into account inputs from the scoping opinion, preliminary environmental information report (PEIR) and ongoing engineering and survey work and feedback from our consultations.

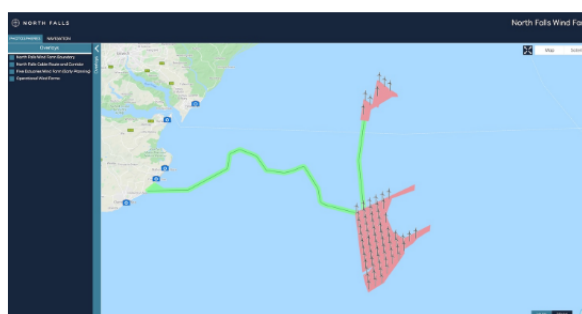
At this stage we can give a high level summary of its key components; offshore array, proposed offshore cable route and landfall, and an onshore area of search. As the onshore grid connection - where the project will connect into the national grid - is still to be determined by National Grid, we do not yet know the location of the project's onshore infrastructure. This means the route of the onshore cables and site of the onshore substation are not yet known, although North Essex is the most likely location.


[VIEW LARGER](#)

## Key Components

North Falls will comprise a number of wind turbines on foundations, with array cables connecting them to up to two offshore substations. Marine export cables will bring the power to shore, while onshore cables will carry the power to an onshore substation. From here the power will be transmitted to the national grid.

To view what the wind farm could look like we have prepared this 3D interactive model with viewpoints from onshore locations. The model features the potentially smallest and largest turbines in our scoping report, so you can compare the difference in potential visual impact by switching between the screens. Please read the instructions to ensure you get the most out of the model.


[INTERACTIVE 3D MODEL](#)

## Turbines

As turbine technology is likely to evolve between now and the possible start of construction for North Falls, we are looking at a range in terms of size and number installed. The project has the potential for up to 71 turbines, each comprising tapered tubular towers and three blades attached to a nacelle housing mechanical and electrical generating equipment.



**Up to 71**

Number of wind turbine generators



**150km<sup>2</sup>**

Array area coverage



**337m**

Maximum rotor diameter



**397m**

Maximum rotor tip height



**22.5km**

Distance to shore (closest)

## Foundations

Each turbine and the offshore substation(s) will sit on top of a foundation. The type and design of foundations will be informed by site investigations and a procurement process, after the project has been consented. They may be: monopiles; jackets on pin piles or on suction caissons, or gravity base structures.

## Offshore Electrical Infrastructure

This will comprise the array cables between the turbines, offshore substation(s) and the export cable bringing the power to shore.

The maximum length of array cabling for North Falls is estimated to be 228km with the design across both the north and south sections. The overall turbine and array layout will be finalised post-consent. Likewise the location and design of the offshore substations will also be finalised during the design phase of the project.



**55km**

Provisional offshore cable route length



**Up to 4**

Maximum number of offshore export circuits



**0.5 - 3m**

Target minimum cable burial depth where buried



**2**

Maximum number of offshore substation platforms



**228km**

Maximum estimated length of array cables

## Onshore Electrical Infrastructure

The onshore elements of North Falls will comprise buried cables carrying the power from the landfall point to a new onshore substation, which then transforms the electricity so it can enter the national grid via another substation to be constructed by National Grid. From here it will be delivered to the end users: homes, businesses and industry.



**Horizontal directional drilling**

Proposed landfall installation method



**High voltage alternating current**

Electrical connection type



**1**

Number of onshore substations



**Up to 70m**

Maximum onshore cable route width during construction



**200m x 250m**

Maximum onshore substation footprint



**18m**

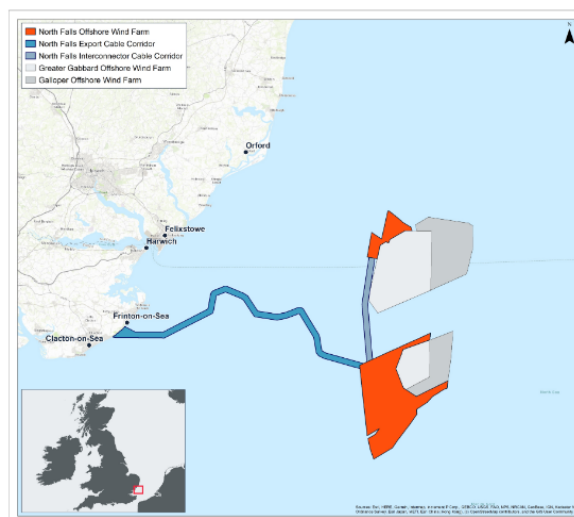
Maximum onshore substation height

## The Project: Offshore

The offshore project area lies within the Outer Thames Estuary, in the southern North Sea. Its closest point to land is 22km from the East Anglia coast.

### Offshore site

Like our sister project Greater Gabbard, the North Falls array area is split into two separate areas, with boundaries to take the existing shipping route into account. It will be within these two boundaries that turbines, array cables and offshore platform (substation) will be installed. The northern site covers approximately 21 km<sup>2</sup> while the larger southern site covers approximately 130km<sup>2</sup>.


[DOWNLOAD PDF](#)


## Export cable corridor

The electricity generated by North Falls will be transmitted to shore by export cables which will be located within an offshore export cable corridor. Our early planning works have identified a proposed corridor to run from the southern array area to a proposed landfall on the Essex coast between Clacton-on-Sea and Frinton-on-Sea.

The proposed offshore export cable corridor passes to the north of the environmental designations Margate and Long Sands Special Area of Conservation (SAC) and Kentish Knock East Marine Conservation Zone (MCZ), with a small overlap with the Outer Thames Estuary Special Protection Area (SPA) as it approaches landfall. A number of constraints were considered in the routing of the provisional offshore export cable corridor including: engineering feasibility; nature conservation designations; other offshore wind farms; shipping and navigation; dredging areas; existing infrastructure and wrecks. In addition to general shipping and navigation we have also taken into consideration other specific sea users in particular: fishing activity, aggregate and military use.

The project design also includes an interconnector cable between the northern and southern array areas.

### Feedback Questions

8. Do you have any questions or comments in relation to our proposed array (wind farm / turbine) areas?

Please add your comments

9. Do you have any questions or comments in relation to our proposed offshore cable corridor?

Please add your comments

10. This could be comments on marine ecology, shipping or anything else you feel relevant.

Please add your comments

[+ ADD TO MY FEEDBACK](#)

## The Project: Landfall

---

### Landfall search area

The landfall search area - a section of coastline where the offshore export cable could come ashore - has been defined through a process of engineering and environmental review and assessment. This process has taken into account a range of constraints including designated sites, nature reserves, land use, historic features and technical feasibility, which has narrowed down the possible location to between Clacton-on-Sea and Frinton-on-Sea. The precise landfall location will be selected during 2022 and the team will also incorporate relevant consultation feedback and environmental and engineering survey data.

There will be no permanent building at landfall, although there would be temporary disruption during the project construction. The objective is to keep any disruption to a minimum through the use of certain installation methodologies. At the landfall site it is proposed to use a technique called horizontal directional drilling (HDD), which will take the cable deep under Holland Haven Marshes Site of Special Scientific Interest (SSSI) and so avoid crossing the site. We have recently carried out a comprehensive suite of surveys of the SSSI to understand the ecological importance of the site and will continue to refine the plans, including input from our consultation work.

## Feedback Questions

---

11. Do you make use of the coastal area between Clacton-on-Sea and Frinton-on-Sea?

☐ Yes

☐ No

12. If yes, what type of activity/activities do you do there? (tick all applicable)

☐ Bird watching

☐ Hiking / Rambling

☐ Running / Exercise

☐ Dog walking

☐ Playing golf

☐ Swimming

☐ Fishing

☐ Marine recreation

☐ General recreation

☐ Other

13. Do you have any comments about the proposal for our cable landfall between Clacton-on-Sea and Frinton-on-Sea?

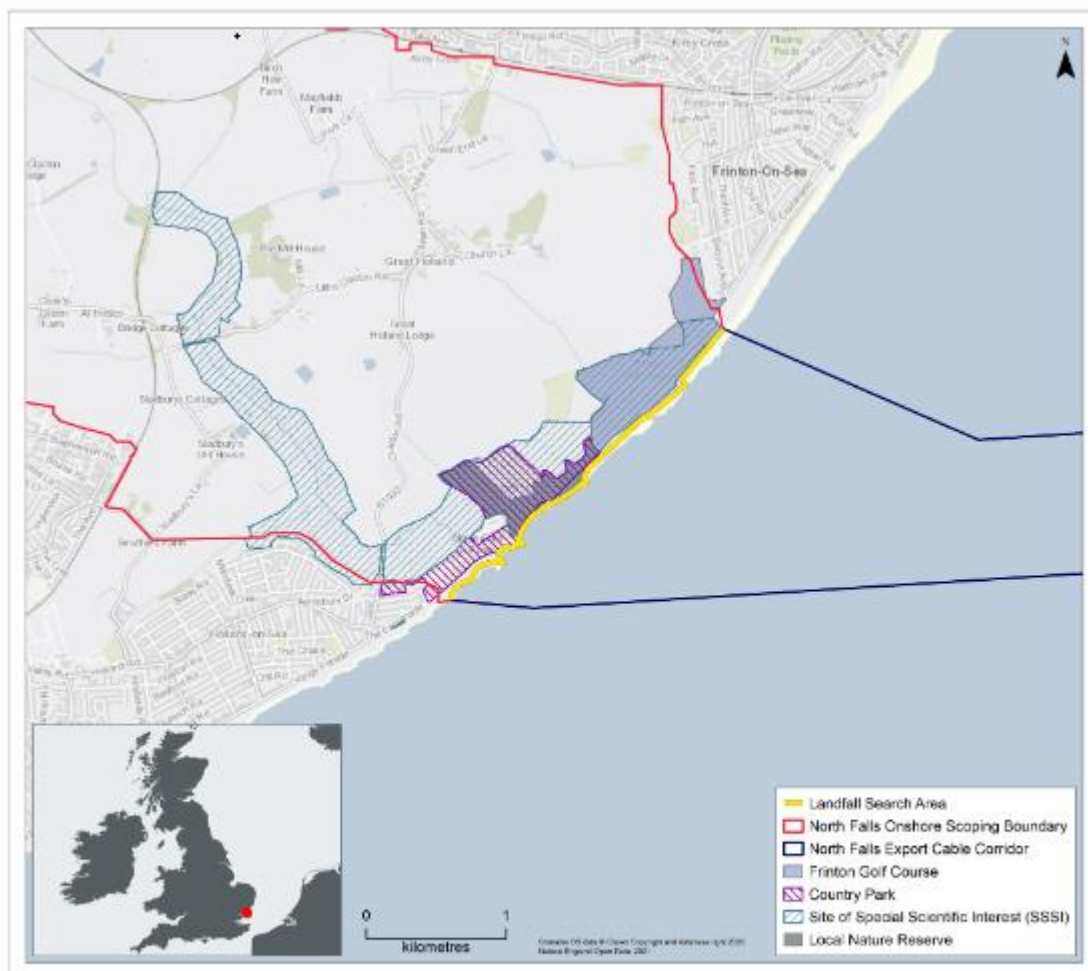
Please add your comments



#### 14. Do you have any questions or comments about the proposal to use horizontal directional drilling (HDD) to avoid sensitive areas?

Please add your comments

**+ ADD TO MY FEEDBACK**



**DOWNLOAD PDF**



## The Project: Onshore

---

### Onshore cable route

The route North Fall's cables take over land and the site of the onshore substation will depend on the location of National Grid's connection into the national transmission system. We are currently awaiting a decision from National Grid as to the location of the grid connection. When this decision is made (expected early 2022) then North Falls will be able to define a route for the onshore cables and a site for our onshore substation. However as North Essex is considered the likely location for our grid connection, we have started undertaking early surveys across a broad area of search that is known as the 'scoping area'.



## Onshore scoping area

---

To progress the project while awaiting the National Grid decision on our grid connection point, the North Falls team has defined an area in North Essex within which the grid connection point is likely to be located. This is known as the onshore 'scoping area'.

This is the first stage in a long process and the actual footprint of any eventual development will be significantly smaller than this initial broad area of search.

The area was identified by filtering out broad constraints such as population centres and sites of importance for nature conservation, whilst keeping within a certain distance of existing National Grid infrastructure such as the 132kV line between Ardleigh Road and Little Clacton substations.

The subsequent onshore scoping area is approximately 150km<sup>2</sup> and located within the Tendring District of Essex. It extends from the coast, between Clacton-on-Sea and Frinton-on-Sea, approximately 20 kilometres inland.

Our ongoing site selection activity will look within this broad onshore scoping area to identify specific locations for each elements of the onshore electrical infrastructure required for North Falls. Future consultations will present the outcome of this work and offer opportunities to input into the proposed locations.

## Feedback Questions

15. Please order the issues that you consider to be the most important in relation to the onshore impacts of the wind farm.

Please click and drag to sort into your order of preference.

| Most important  |   |   |
|-----------------|---|---|
| 1               | Ground conditions (geology, hydrology and soil) | ↕ |
| 2               | Land use and contamination                      | ↕ |
| 3               | Water quality and flood risk                    | ↕ |
| 4               | Air quality and noise                           | ↕ |
| 5               | Onshore ecology (habitats, flora and fauna)     | ↕ |
| 6               | Archeology and cultural heritage                | ↕ |
| 7               | Traffic and transport                           | ↕ |
| 8               | Landscape and visual                            | ↕ |
| 9               | Tourism and recreation                          | ↕ |
| 10              | Socio-economic (local economy and society)      | ↕ |
| Least important |   |   |

**16. Please include details on why you have chosen these issues**

Please add your comments

+ ADD TO MY FEEDBACK

## Onshore details

While we do not have the grid connection location yet, we do know that the point where our offshore cables will reach land is likely to be between Clacton-on-Sea and Frinton-on-Sea – and that both the onshore cable and substation will be located within the scoping area described above.

We also know that any onshore cables will be buried underground to minimise visual and environmental impact. A temporary working corridor of up to 70m wide will be needed to install the underground cables along with additional areas for temporary construction compounds. While there will be temporary disruption during construction, once the cables have been installed the land will be restored to its former use. Where the cable route crosses features such as roads, watercourses and ecologically sensitive areas, the aim will be to go under them using horizontal directional drilling, as at the landfall, to avoid impacts.

Cont.

## APPENDIX L – Downloadable information sheet

The graphic features a dark, moody background of a stormy sea under a heavy, dark blue sky. In the upper center, there is a white circular logo containing a stylized three-bladed wind turbine. Below the logo, the text 'NORTH FALLS' is written in a bold, white, sans-serif font, with 'Offshore Wind Farm' in a smaller, italicized font underneath. The main title 'INTRODUCING NORTH FALLS OFFSHORE WIND FARM' is prominently displayed in large, bold, white, sans-serif capital letters across the middle of the image. Below this, the word 'OVERVIEW' is written in bold, white, sans-serif capital letters. The text below 'OVERVIEW' is in a smaller, white, sans-serif font, providing details about the project's location and development. The bottom of the graphic is a solid dark blue rectangle.

  
**NORTH FALLS**  
*Offshore Wind Farm*

**INTRODUCING  
NORTH FALLS  
OFFSHORE WIND FARM**

**OVERVIEW**

North Falls Offshore Wind Farm is an extension to the existing 504 MW Greater Gabbard Offshore Wind Farm. The project is being developed in the southern North Sea, more than 20km off the UK coast.

The site is in two parts, which together cover a total area of 150km<sup>2</sup>. The project is being developed by North Falls Offshore Wind Farm Limited, a joint venture company owned equally by SSE Renewables and RWE.

## DESCRIPTION

The North Falls project is still at an early stage and will be developed in a way that takes into account inputs from the scoping opinion, preliminary environmental information report (PEIR) and ongoing engineering / survey work. Importantly, this will also include the community and stakeholder feedback that we gather during our forthcoming consultations.

At this stage, we can give a high-level summary of its key components including the offshore array, up to 71 wind turbines, the proposed offshore cable route and the broad point of landfall – which is the point at which the undersea cables will come onshore.

As the onshore grid connection - where the project will connect into the transmission network - is still to be determined by National Grid, we do not yet know the location of the project's onshore infrastructure. This means the route of the onshore cables and the site of the onshore substation are not yet known, although North Essex is the most likely location. We have identified an 'onshore scoping area' which is where we expect to identify possible locations for both the onshore cable route and the substation.

## PROJECT TIMELINE

In February 2017, The Crown Estate, which is the manager of the seabed, launched a process for wind farm operators to apply for extensions to their existing projects. Eight project applications were received – including an application for what has now become the North Falls Offshore Wind Farm.

Expert independent advisors were consulted as well as marine planning authorities, the statutory nature conservation bodies and a number of non-governmental stakeholders.

In August 2019, The Crown Estate announced that seven of the extension application projects would progress to the award of development rights, including North Falls Offshore Wind Farm.

The Agreement for Lease between North Falls Offshore Wind Farm and The Crown Estate was signed in Autumn 2020 and the project is now in the early stages of development. As North Falls is a Nationally Significant Infrastructure Project its planning permission, anticipated in 2025, is known as a development consent order (DCO).

Construction would take place in the latter part of the decade, with a view to the project being operational by 2030, aligning with Government targets.

## AT A GLANCE

Located 20 kilometres off the UK coast in the southern North Sea, covering an area of 150 km<sup>2</sup>



Potentially it will comprise up to 71 turbines, depending on the size of turbine selected



Likely investment in UK electricity infrastructure of more than £1.5 billion



Onshore grid connection is still to be provided by National Grid but a likely location is in North Essex



North Falls is being developed by a joint venture company owned equally by SSE Renewables and RWE



The Development Consent Order application and supporting environmental assessment and other documents is currently scheduled for submission in 2023



Once operational it could generate enough green energy to power the equivalent of more than 400,000 UK homes



Contributing to the UK government's ambitions of 40GW of offshore wind by 2030 (current figure is around 10.5GW)

## FIND OUT MORE

For more information on the project visit [www.northfallsoffshore.com](http://www.northfallsoffshore.com)

## CONTACT US

Telephone: 0800 254 5340  
Email: [contact@northfallsoffshore.com](mailto:contact@northfallsoffshore.com)  
Post: FREEPOST North Falls



**NORTH FALLS**  
Offshore Wind Farm

